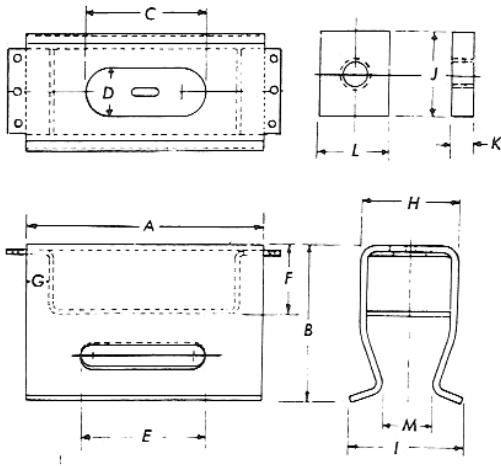


Fig 180A: Steel Concrete Insert



Material: Steel

Service Application: The Universal Concrete Insert provides a superior, most economical means of overhead support in all types of concrete construction. A simple twist of a screwdriver inserted through the center slot removes the "Snap-Out" plug which eliminates the necessity for stuffing the insert box. [Fig 180A](#) for 3/8" to 3/4". [Fig 180B](#) for 7/8".

Finish: Black, galvanized or painted.

Ordering: Specify Type A or Type B, figure number and finish.

TYPE NO.	A	B	C	D	E	F	G	H	I	J	K	L	M	SIZE NUT	WGT./C APPROX.	MAX. REC. LOAD, LB.*
A	3 3/16	2 5/8	1 7/8	1 3/16	2	1 1/8	3/8	1 3/16	1 1/2	1 1/4	5/16	1 1/4	1 1/16	3/8	75	1000
A	3 3/16	2 5/8	1 7/8	1 3/16	2	1 1/8	3/8	1 3/16	1 1/2	1 1/4	5/16	1 1/4	1 1/16	1/2	75	1000
A	3 3/16	2 5/8	1 7/8	1 3/16	2	1 1/8	3/8	1 3/16	1 1/2	1 1/4	5/16	1 1/4	1 1/16	3/8	75	1000
A	3 3/16	2 5/8	1 7/8	1 3/16	2	1 1/8	3/8	1 3/16	1 1/2	1 1/4	5/16	1 1/4	1 1/16	3/4	75	1000
B	3 3/16	2 11/16	2 5/8	1 5/16	2	1 5/16	3/8	1 7/8	2 3/16	1 3/8	1/2	1 3/8	1 1/8	7/8	100	1500

* With a minimum safety factor of 5.

Factory Mutual Approved.