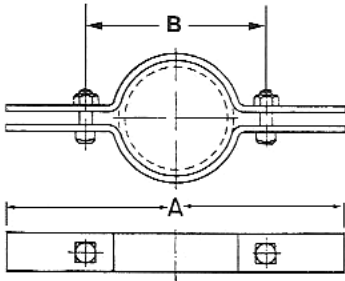


Fig 126CT: Copper Coated Riser Clamp



Material: Steel
Finish: Carbon steel copper plated.
Ordering: Specify nominal tubing size and figure number.

FIG 126 CT



NOMINAL TUBE SIZE	A	STOCK SIZE	WT/C APROX	MAX REC'M LOAD LB.
3/4	9	1/8 x 1 1/4	81	250
1	9 1/8	1/8 x 1 1/4	94	250
1 1/4	9 1/2	3/16 x 1 1/4	138	500
1 1/2	9 7/8	3/16 x 1 1/4	144	500
2	10 1/4	3/16 x 1 1/4	156	500
2 1/2	10 3/4	3/16 x 1 1/4	166	500
3	11 1/4	3/16 x 1 1/4	175	500
3 1/2	12 1/4	1/4 x 1 1/4	252	600
4	12 3/4	1/4 x 1 1/4	263	600

PROJECT INFORMATION	APPROVED
JOB:	NOTES:
ADDRESS:	
CONTRACTOR:	
ENGINEER:	
DATE:	
APPROVED _____ NOT APPROVED _____ APPROVED AS NOTED _____	