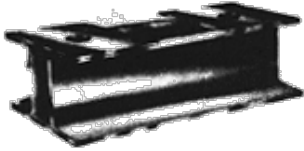


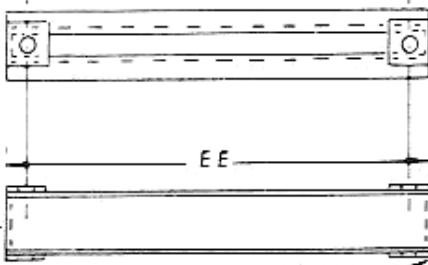
# RAUCH

Phone: (718) 507-8844 Fax: (718) 565-6018  
 Email: [info@irauch.com](mailto:info@irauch.com)  
 Address: 32-20 112th St, East Elmhurst, NY 11369

**Fig 371:** Channel Trapeze Hanger



**Material:** Steel  
**Service Application:** General piping.  
**Finish:** Black, galvanized or painted.  
**Ordering:** Specify size, figure number, end to end, steel size and rod size finish. [Fig 102](#) Square Fish Plates must be ordered separately.

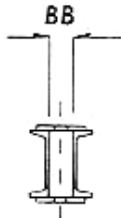


END PLATES  
WELDED

4 FISH PLATES  
(LOOSE )

FIG 371

ROD SIZE  $\pm \frac{1}{4}$ "



CHANNEL SIZE	ALLOWABLE CONCENTRATED LOAD (KIPS) AT CENTER OF SPAN					
	36	48	60	72	84	96
3 ] [ 4.1	4.90	3.70	2.90	2.40	2.10	1.80
4 ] [ 5.4	8.44	6.34	8.08	4.22	3.62	3.17
5 ] [ 6.7	13.34	10.00	8.00	6.66	5.72	5.20
6 ] [ 8.2	19.12	14.34	11.48	9.58	8.20	7.18
8 ] [ 11.5	36.00	27.00	21.60	18.00	15.44	13.50

1 KIP = 1000 LBS

PROJECT INFORMATION	APPROVED
JOB:	NOTES:
ADDRESS:	
CONTRACTOR:	
ENGINEER:	
DATE:	
APPROVED _____ NOT APPROVED _____ APPROVED AS NOTED _____	