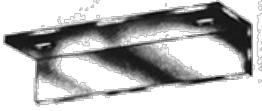


Fig 374: Angle Trapeze Hanger



Material: Steel
Service Application: General piping.
Finish: Black, galvanized or painted.
Ordering: Specify size, figure number, center to center, rod size and finish.

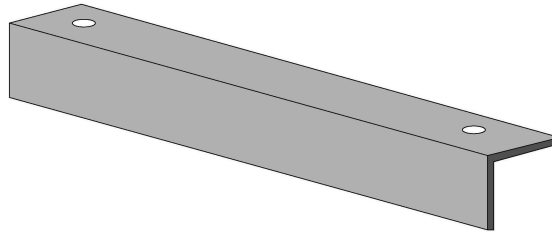
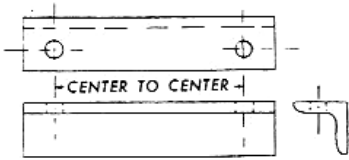


Fig 374

ANGLE SIZE	ALLOWABLE CONCENTRATED LOAD (LBS) AT CENTER OF SPAN									
	10	12	18	24	30	36	48	60	72	84
1 1/2 X 1 1/2 X 1/4	1109	924	616	462	--	--	--	--	--	--
2 X 2 X 1/4	2117	1764	1177	882	710	590	--	--	--	--
3 X 3 X 1/4	--	3860	2577	1930	1540	1290	970	--	--	--
4 X 4 X 3/8	--	--	--	--	--	3330	2500	2000	1670	1430
5 X 5 X 3/8	--	--	--	--	--	4900	3660	2930	2440	2100
6 X 6 X 3/8	--	--	--	--	--	7350	5500	4400	3670	3140

Available in Black, galvanized or painted
 Specify center to center, rod size and finish

PROJECT INFORMATION	APPROVED
JOB:	NOTES:
ADDRESS:	
CONTRACTOR:	
ENGINEER:	
DATE:	
APPROVED _____	NOT APPROVED _____ APPROVED AS NOTED _____