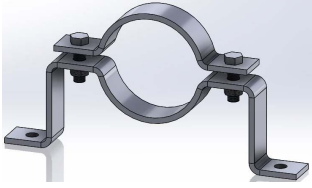
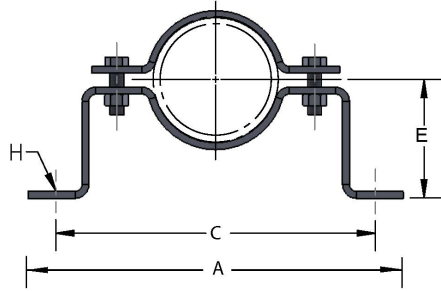


**Fig 179:** Offset Pipe Clamp



**Material:** Steel  
**Service Application:** To support general piping, running from wall or floor (not to be used as a riser type support). This clamp can be furnished with "E" dimension to suit field conditions  
**Finish:** Black, galvanized or painted.  
**Ordering:** Specify size, figure number and finish.



PIPE SIZE	PIPE OD	BOLT	E	A	C	H	WGT EACH (lbs)	MAX REC LOAD (lbs)
1/2	0.84	3/8	2-9/16	8-3/4	7-3/16	7/16	1.51	200
3/4	1.050	3/8	2-5/8	8-7/8	7-3/8	7/16	1.62	200
1	1.315	3/8	2-5/8	9-1/8	7-5/8	7/16	1.70	200
1-1/4	1.660	3/8	2-13/16	9-1/2	8	7/16	1.75	200
1-1/2	1.900	3/8	2-15/16	9-5/8	8-1/16	7/16	1.82	200
2	2.375	3/8	3-3/16	10-3/4	9-3/8	7/16	2.07	410
2-1/2	2.875	3/8	3-7/16	11-5/8	10-1/4	7/16	2.24	410
3	3.500	3/8	3-3/4	12-3/4	11	7/16	2.52	410
3-1/2	4.000	3/8	4	13	11-1/4	7/16	2.64	410
4	4.500	1/2	4-1/4	13-1/2	11-1/2	9/16	3.61	600
5	5.563	1/2	4-3/4	15-3/8	13-3/8	9/16	4.00	600
6	6.625	1/2	5-5/16	16-3/8	14-1/2	9/16	6.51	850
8	8.625	1/2	6-5/16	19-1/4	17-1/4	9/16	7.92	850

PROJECT INFORMATION	APPROVED
JOB:	NOTES:
ADDRESS:	
CONTRACTOR:	
ENGINEER:	
DATE:	
APPROVED _____ NOT APPROVED _____ APPROVED AS NOTED _____	